



آموزش نتورک پلاس

# Network Hardening

# Hardening

» Securing a system by reducing its surface of vulnerabilities.

- Application hardening
- Operating system hardening
- Server hardening
- Endpoint hardening
- Database hardening
- Network hardening
- ...



# Patch Management

- » Patch management is the process of applying updates to software, drivers, and firmware to protect against vulnerabilities.
- » Ensure patches don't create new problems once installed.
- » Involves Planning, testing, implementing, and auditing of software patches.

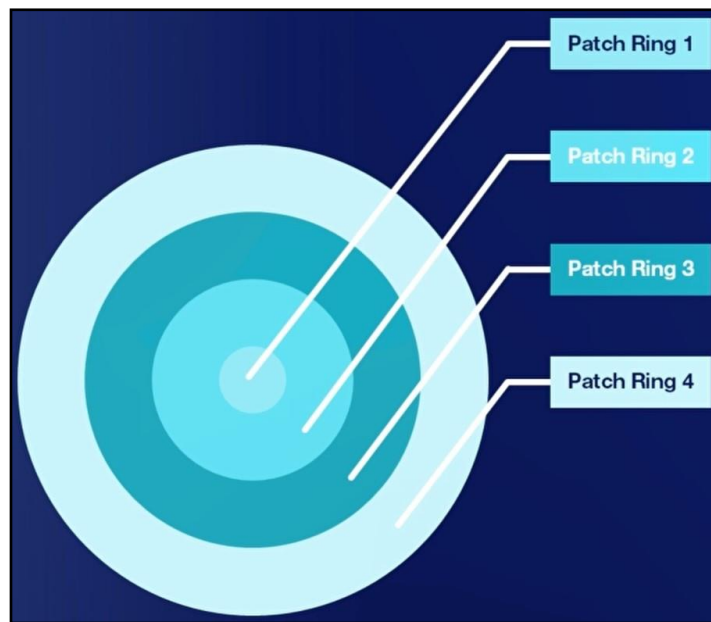


# Patch Management

- » Disable the Windows Update service from running automatically on the workstation.



# Patch Management



# Cisco IOS (Internetwork Operating System)



# ManageEngine

- » Take control of your IT.  
Monitor, manage, and secure  
your IT infrastructure.



# Password Security

- » Minimum password length
- » Complexity
- » Periodic changes (42-90 days)
- » Limit on password reuse
- » Long vs Complex

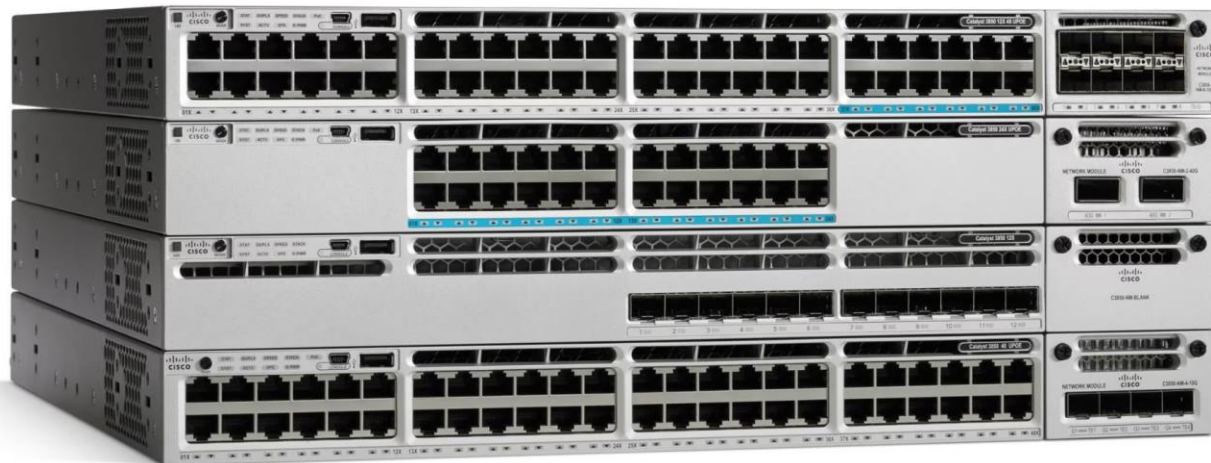


# Unneeded Services

- » Least Functionality

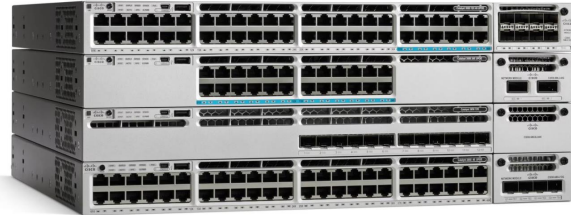
Process of configuring a device, a server, or a workstation to only provide essential services required by the user.

# Hardening guide for Cisco Routers and Switches

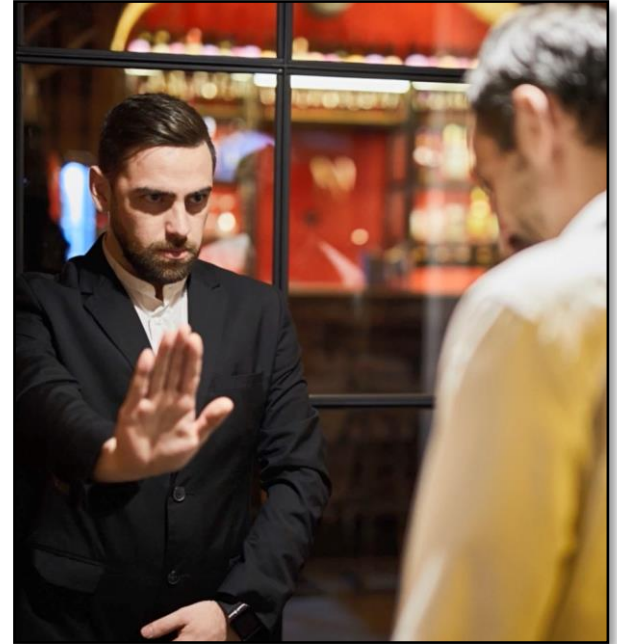


# Hardening guide for Cisco Routers and Switches

- » Disabling Unused Interfaces
- » Port security
- » DHCP snooping
- » DAI
- » .
- » .
- » .



# Access Control List (ACL)



## مرکز ماهر

مرکز مدیریت امداد و هماهنگی عملیات رخدادهای رایانه‌ای



**عباس ولی زاده**

مدرس دوره های شبکه و امنیت